

bsm-62526R**[Primary Antibody]****IL-11RA Recombinant Rabbit mAb****BioSS**
ANTIBODIES

www.bioss.com.cn

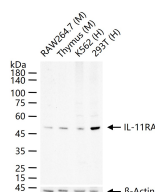
sales@bioss.com.cn

techsupport@bioss.com.cn

400-901-9800

— DATASHEET —

Host: Rabbit	Isotype: IgG	Applications: WB (1:500-2000) Flow-Cyt (1:50-100) ICC/IF (1:50-200)
Clonality: Recombinant		
GeneID: 3590	SWISS: Q14626	
Target: IL-11RA		Reactivity: Human, Mouse
Immunogen: A synthesized peptide derived from human IL 11 receptor alpha: 380-422.		
Purification: affinity purified by Protein A		
Storage: 10mM phosphate buffered saline(pH 7.4) with 150mM sodium chloride, 0.05% BSA, 0.02% Proclin300 and 50% glycerol. Store at 4°C for short term. Store at -20°C for long term. Avoid repeated freeze/thaw cycles.		Predicted MW.: 45
Background: Receptor for interleukin-11 (IL11). The receptor systems for IL6, LIF, OSM, CNTF, IL11 and CT1 can utilize IL6ST for initiating signal transmission. The IL11/IL11RA/IL6ST complex may be involved in the control of proliferation and/or differentiation of skeletogenic progenitor or other mesenchymal cells (Probable). Essential for the normal development of craniofacial bones and teeth. Restricts suture fusion and tooth number.		Subcellular Location: Cell membrane

— VALIDATION IMAGES —

25 ug total protein per lane of various lysates (see on figure) probed with IL-11RA monoclonal antibody, unconjugated (bsm-62526R) at 1:1000 dilution and 4°C overnight incubation. Followed by conjugated secondary antibody incubation at r.t. for 60 min.