

bsm-62525R**[Primary Antibody]****Bioss**
ANTIBODIES

www.bioss.com.cn

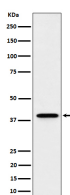
sales@bioss.com.cn

techsupport@bioss.com.cn

400-901-9800

WDR68 Recombinant Rabbit mAb**— DATASHEET —**

Host: Rabbit	Isotype: IgG	Applications: WB (1:1000-2000) IHC-P (1:100-200) IHC-F (1:100-200) IF (1:100-200) Flow-Cyt (1:50-100) Reactivity: Human Predicted MW.: 39 Subcellular Location: Cytoplasm ,Nucleus
Clonality: Recombinant		
GeneID: 10238	SWISS: P61962	
Target: WDR68		
Immunogen: A synthesized peptide derived from human DCAF7: 210-248.		
Purification: affinity purified by Protein A		
Storage: 10mM phosphate buffered saline(pH 7.4) with 150mM sodium chloride, 0.05% BSA, 0.02% Proclin300 and 50% glycerol. Store at 4°C for short term. Store at -20°C for long term. Avoid repeated freeze/thaw cycles.		
Background: Involved in craniofacial development. Acts upstream of the EDN1 pathway and is required for formation of the upper jaw equivalent, the palatoquadrate.		

— VALIDATION IMAGES —

Western blot analysis of HeLa cell lysate. Using WDR68 (bsm-62525R) monoclonal antibody at 1:1000 dilution and 4°C overnight incubation. Followed by conjugated secondary antibody incubation at r.t. for 60 min.