

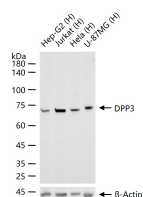
bsm-62520R**[Primary Antibody]****DPP3 Recombinant Rabbit mAb****BioSS**
ANTIBODIES

www.bioss.com.cn

sales@bioss.com.cn

techsupport@bioss.com.cn

400-901-9800

— DATASHEET —**Host:** Rabbit**Isotype:** IgG**Clonality:** Recombinant**CloneNo.:** 16C19**GeneID:** 10072**SWISS:** Q9NY33**Target:** DPP3**Immunogen:** A synthesized peptide derived from human DPP3: 700-737.**Purification:** affinity purified by Protein A**Storage:** 10mM phosphate buffered saline(pH 7.4) with 150mM sodium chloride, 0.05% BSA, 0.02% Proclin300 and 50% glycerol. Store at 4°C for short term. Store at -20°C for long term. Avoid repeated freeze/thaw cycles.**Background:** Cleaves and degrades bioactive peptides, including angiotensin, Leu-enkephalin and Met-enkephalin. Also cleaves Arg-Arg-beta-naphthylamide.**Applications:** **WB** (1:500-2000)**Flow-Cyt** (1:50-100)**Reactivity:** Human**Predicted**
MW.: 83**Subcellular**
Location: Cytoplasm**— VALIDATION IMAGES —**

25 ug total protein per lane of various lysates (see on figure) probed with DPP3 monoclonal antibody, unconjugated (bsm-62520R) at 1:1000 dilution and 4°C overnight incubation. Followed by conjugated secondary antibody incubation at r.t. for 60 min.