

bsm-62516R**[Primary Antibody]**

www.bioss.com.cn

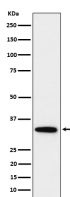
sales@bioss.com.cn

techsupport@bioss.com.cn

400-901-9800

PPP6C Recombinant Rabbit mAb**— DATASHEET —**

Host: Rabbit	Isotype: IgG	Applications: WB (1:500-2000) Flow-Cyt (1:50-100) ICC/IF (1:50-200) Reactivity: Human Predicted MW.: 35 Subcellular Location: Cytoplasm
Clonality: Recombinant		
GeneID: 5537	SWISS: O00743	
Target: PPP6C		
Immunogen: A synthesized peptide derived from human PPP6C: 280-305.		
Purification: affinity purified by Protein A		
Storage: 10mM phosphate buffered saline(pH 7.4) with 150mM sodium chloride, 0.05% BSA, 0.02% Proclin300 and 50% glycerol. Store at 4°C for short term. Store at -20°C for long term. Avoid repeated freeze/thaw cycles.		
Background: Catalytic subunit of protein phosphatase 6 (PP6).PP6 is a component of a signaling pathway regulating cell cycle progression in response to IL2 receptor stimulation.		

— VALIDATION IMAGES —

Western blot analysis of HeLa cell lysate. Using PPP6C (bsm-62516R) monoclonal antibody at 1:1000 dilution and 4°C overnight incubation. Followed by conjugated secondary antibody incubation at r.t. for 60 min.