

bsm-62515R**[Primary Antibody]****NDRG3 Recombinant Rabbit mAb****Bioss**
ANTIBODIES

www.bioss.com.cn

sales@bioss.com.cn

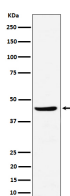
techsupport@bioss.com.cn

400-901-9800

— DATASHEET —

Host: Rabbit	Isotype: IgG	Applications: WB (1:1000-2000) IHC-P (1:100-200) IHC-F (1:100-200) IF (1:100-200) Reactivity: Human Predicted MW.: 41 Subcellular Location: Cytoplasm
Clonality: Recombinant		
GeneID: 57446	SWISS: Q9UGV2	
Target: NDRG3		
Immunogen: A synthesized peptide derived from human NDRG3: 1-35.		
Purification: affinity purified by Protein A		
Storage: 10mM phosphate buffered saline(pH 7.4) with 150mM sodium chloride, 0.05% BSA, 0.02% Proclin300 and 50% glycerol. Store at 4°C for short term. Store at -20°C for long term. Avoid repeated freeze/thaw cycles.		
Background: Predicted to be involved in signal transduction. Located in cytoplasm.		

VALIDATION IMAGES

— VALIDATION IMAGES —

Western blot analysis of Raji cell lysate. Using NDRG3 (bsm-62515R) monoclonal antibody at 1:1000 dilution and 4°C overnight incubation. Followed by conjugated secondary antibody incubation at r.t. for 60 min.