

**bsm-62506R****[ Primary Antibody ]****BioSS**  
**ANTIBODIES**

www.bioss.com.cn

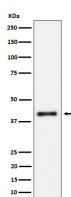
sales@bioss.com.cn

techsupport@bioss.com.cn

400-901-9800

**IL15RA Recombinant Rabbit mAb****— DATASHEET —**

<b>Host:</b> Rabbit	<b>Isotype:</b> IgG	<b>Applications:</b> <b>WB</b> (1:1000-2000) <b>ICC/IF</b> (1:50-200)
<b>Clonality:</b> Recombinant		<b>Reactivity:</b> Human
<b>GeneID:</b> 3601	<b>SWISS:</b> Q13261	
<b>Target:</b> IL15RA		
<b>Immunogen:</b> A synthesized peptide derived from human IL 15 receptor alpha: 118-202.		<b>Predicted MW.:</b> 28
<b>Purification:</b> affinity purified by Protein A		<b>Subcellular Location:</b> Secreted ,Extracellular matrix ,Cell membrane ,Cytoplasm ,Nucleus
<b>Storage:</b> 10mM phosphate buffered saline(pH 7.4) with 150mM sodium chloride, 0.05% BSA, 0.02% Proclin300 and 50% glycerol. Store at 4°C for short term. Store at -20°C for long term. Avoid repeated freeze/thaw cycles.		
<b>Background:</b> Receptor for interleukin-15. Expression of different isoforms may alter or interfere with signal transduction. Isoform 5, isoform 6, isoform 7 and isoform 8 do not bind IL15. Signal transduction involves STAT3, STAT5, STAT6, JAK2 and SYK.		

**— VALIDATION IMAGES —**

Western blot analysis of Raji cell lysate. Using IL15RA (bsm-62506R) monoclonal antibody at 1:1000 dilution and 4°C overnight incubation. Followed by conjugated secondary antibody incubation at r.t. for 60 min.