

bsm-62499R**[Primary Antibody]****BioSS**
ANTIBODIES

www.bioss.com.cn

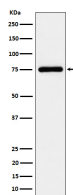
sales@bioss.com.cn

techsupport@bioss.com.cn

400-901-9800

ASPSCR1 Recombinant Rabbit mAb**— DATASHEET —**

Host: Rabbit	Isotype: IgG	Applications: WB (1:1000-2000) IHC-P (1:100-200) IHC-F (1:100-200) IF (1:100-200) Reactivity: Human, Mouse, Rat Predicted MW.: 60 Subcellular Location: Cell membrane ,Cytoplasm ,Nucleus
Clonality: Recombinant		
GeneID: 79058	SWISS: Q9BZE9	
Target: ASPSCR1		
Immunogen: A synthesized peptide derived from human TUG: 220-250.		
Purification: affinity purified by Protein A		
Storage: 10mM phosphate buffered saline(pH 7.4) with 150mM sodium chloride, 0.05% BSA, 0.02% Proclin300 and 50% glycerol. Store at 4°C for short term. Store at -20°C for long term. Avoid repeated freeze/thaw cycles.		
Background: Tethering protein that sequesters GLUT4-containing vesicles in the cytoplasm in the absence of insulin. Modulates the amount of GLUT4 that is available at the cell surface (By similarity).Enhances VCP methylation catalyzed by VCPKMT.		

— VALIDATION IMAGES —

Western blot analysis of K562 cell lysate. Using ASPSCR1 (bsm-62499R) monoclonal antibody at 1:1000 dilution and 4°C overnight incubation. Followed by conjugated secondary antibody incubation at r.t. for 60 min.