

bsm-62497R**[Primary Antibody]****ZNF259/ZPR1 Recombinant Rabbit mAb****BioSS**
ANTIBODIES

www.bioss.com.cn

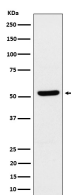
sales@bioss.com.cn

techsupport@bioss.com.cn

400-901-9800

— DATASHEET —

Host: Rabbit	Isotype: IgG	Applications: WB (1:1000-2000) IHC-P (1:100-200) IHC-F (1:100-200) IF (1:100-200) Reactivity: Human, Mouse, Rat Predicted MW.: 51 Subcellular Location: Cytoplasm ,Nucleus
Clonality: Recombinant		
GeneID: 8882	SWISS: O75312	
Target: ZNF259/ZPR1		
Immunogen: A synthesized peptide derived from human ZPR1: 400-459.		
Purification: affinity purified by Protein A		
Storage: 10mM phosphate buffered saline(pH 7.4) with 150mM sodium chloride, 0.05% BSA, 0.02% Proclin300 and 50% glycerol. Store at 4°C for short term. Store at -20°C for long term. Avoid repeated freeze/thaw cycles.		
Background: Plays a role for the localization and accumulation of the survival motor neuron protein SMN1 in sub-nuclear bodies, including gems and Cajal bodies. Induces neuron differentiation and stimulates axonal growth and formation of growth cone in spinal cord motor neurons. Plays a role in the splicing of cellular pre-mRNAs. May be involved in H2O2-induced neuronal cell death.		

— VALIDATION IMAGES —

Western blot analysis of MCF7 cell lysate. Using ZNF259/ZPR1 (bsm-62497R) monoclonal antibody at 1:1000 dilution and 4°C overnight incubation. Followed by conjugated secondary antibody incubation at r.t. for 60 min.