

**bsm-62493R**

[ **Primary Antibody** ]

**BioSS**  
ANTIBODIES

www.bioss.com.cn

sales@bioss.com.cn

techsupport@bioss.com.cn

400-901-9800

## Fukutin Recombinant Rabbit mAb

### — DATASHEET —

**Host:** Rabbit

**Isotype:** IgG

**Clonality:** Recombinant

**GeneID:** 2218

**SWISS:** O75072

**Target:** Fukutin

**Immunogen:** A synthesized peptide derived from human Fukutin: 350-461.

**Purification:** affinity purified by Protein A

**Storage:** 10mM phosphate buffered saline(pH 7.4) with 150mM sodium chloride, 0.05% BSA, 0.02% Proclin300 and 50% glycerol. Store at 4°C for short term. Store at -20°C for long term. Avoid repeated freeze/thaw cycles.

**Background:** Catalyzes the transfer of a ribitol-phosphate from CDP-ribitol to the distal N-acetylgalactosamine of the phosphorylated O-mannosyl trisaccharide (N-acetylgalactosamine-beta-3-N-acetylglucosamine-beta-4-(phosphate-6-)mannose), a carbohydrate structure present in alpha-dystroglycan (DAG1).

**Applications:** **WB** (1:1000-2000)

**IHC-P** (1:100-200)

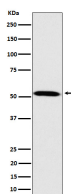
**IHC-F** (1:100-200)

**IF** (1:100-200)

**Reactivity:** Human, Mouse, Rat

**Predicted MW.:** 54

### — VALIDATION IMAGES —



Western blot analysis of HeLa cell lysate. Using Fukutin (bsm-62493R) monoclonal antibody at 1:1000 dilution and 4°C overnight incubation. Followed by conjugated secondary antibody incubation at r.t. for 60 min.