

bsm-62490R**[Primary Antibody]****BioSS**
ANTIBODIES

www.bioss.com.cn

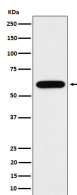
sales@bioss.com.cn

techsupport@bioss.com.cn

400-901-9800

TUB 1 Recombinant Rabbit mAb**— DATASHEET —**

Host: Rabbit	Isotype: IgG	Applications: WB (1:1000-2000) IHC-P (1:100-200) IHC-F (1:100-200) IF (1:100-200) Reactivity: Human, Mouse, Rat Predicted MW.: 56 Subcellular Location: Secreted ,Cell membrane Cytoplasm ,Nucleus
Clonality: Recombinant		
GeneID: 7275	SWISS: P50607	
Target: TUB 1		
Immunogen: A synthesized peptide derived from human Tubby protein homolog: 1-50.		
Purification: affinity purified by Protein A		
Storage: 10mM phosphate buffered saline(pH 7.4) with 150mM sodium chloride, 0.05% BSA, 0.02% Proclin300 and 50% glycerol. Store at 4°C for short term. Store at -20°C for long term. Avoid repeated freeze/thaw cycles.		
Background: Functions in signal transduction from heterotrimeric G protein-coupled receptors. Binds to membranes containing phosphatidylinositol 4,5-bisphosphate.		

— VALIDATION IMAGES —

Western blot analysis of Neuro-2a cell lysate.
Using TUB 1 (bsm-62490R) monoclonal antibody
at 1:1000 dilution and 4°C overnight incubation.
Followed by conjugated secondary antibody
incubation at r.t. for 60 min.