

bsm-62489R

[Primary Antibody]

HLA DMB Recombinant Rabbit mAb

Bioss
ANTIBODIES

www.bioss.com.cn

sales@bioss.com.cn

techsupport@bioss.com.cn

400-901-9800

— DATASHEET —

Host: Rabbit

Isotype: IgG

Clonality: Recombinant

CloneNo.: 14E3

GeneID: 3109

SWISS: P28068

Target: HLA DMB

Immunogen: A synthesized peptide derived from human HLA DMB: 32-85.

Purification: affinity purified by Protein A

Storage: 10mM phosphate buffered saline(pH 7.4) with 150mM sodium chloride, 0.05% BSA, 0.02% Proclin300 and 50% glycerol. Store at 4°C for short term. Store at -20°C for long term. Avoid repeated freeze/thaw cycles.

Background: HLA-DMB belongs to the HLA class II beta chain paralogues. This class II molecule is a heterodimer consisting of an alpha (DMA) and a beta (DMB) chain, both anchored in the membrane.

Applications: **WB** (1:500-2000)

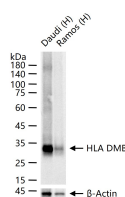
Flow-Cyt (1:50-100)

Reactivity: Human

**Predicted
MW.:** 29

**Subcellular
Location:** Cell membrane ,Cytoplasm

— VALIDATION IMAGES —



25 ug total protein per lane of various lysates (see on figure) probed with HLA DMB monoclonal antibody, unconjugated (bsm-62489R) at 1:1000 dilution and 4°C overnight incubation. Followed by conjugated secondary antibody incubation at r.t. for 60 min.