

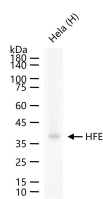
bsm-62488R**[Primary Antibody]****HFE Recombinant Rabbit mAb****BioSS**
ANTIBODIES

www.bioss.com.cn

sales@bioss.com.cn

techsupport@bioss.com.cn

400-901-9800

— DATASHEET —**Host:** Rabbit**Isotype:** IgG**Clonality:** Recombinant**CloneNo.:** 7G10**GeneID:** 3077**SWISS:** Q30201**Target:** HFE**Immunogen:** A synthesized peptide derived from human HFE: 300-348.**Purification:** affinity purified by Protein A**Storage:** 10mM phosphate buffered saline(pH 7.4) with 150mM sodium chloride, 0.05% BSA, 0.02% Proclin300 and 50% glycerol. Store at 4°C for short term. Store at -20°C for long term. Avoid repeated freeze/thaw cycles.**Background:** Binds to transferrin receptor (TFR) and reduces its affinity for iron-loaded transferrin.**Applications:** WB (1:500-2000)**Reactivity:** Human**Predicted
MW.:** 40**Subcellular
Location:** Cell membrane**— VALIDATION IMAGES —**

25 ug total protein per lane of various lysates (see on figure) probed with HFE monoclonal antibody, unconjugated (bsm-62488R) at 1:1000 dilution and 4°C overnight incubation. Followed by conjugated secondary antibody incubation at r.t. for 60 min.