

bsm-62486R**[Primary Antibody]****CoA synthase Recombinant Rabbit mAb****Bioss**
ANTIBODIES

www.bioss.com.cn

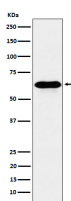
sales@bioss.com.cn

techsupport@bioss.com.cn

400-901-9800

— DATASHEET —

Host: Rabbit	Isotype: IgG	Applications: WB (1:1000-2000) Flow-Cyt (1:50-100)
Clonality: Recombinant		
GeneID: 80347	SWISS: Q13057	Reactivity: Human
Target: CoA synthase		
Immunogen: A synthesized peptide derived from human CoA synthase: 530-564.		Predicted MW.: 62
Purification: affinity purified by Protein A		
Storage: 10mM phosphate buffered saline(pH 7.4) with 150mM sodium chloride, 0.05% BSA, 0.02% Proclin300 and 50% glycerol. Store at 4°C for short term. Store at -20°C for long term. Avoid repeated freeze/thaw cycles.		
Background: Bifunctional enzyme that catalyzes the fourth and fifth sequential steps of CoA biosynthetic pathway.		

— VALIDATION IMAGES —

Western blot analysis of HeLa cell lysate. Using CoA synthase (bsm-62486R) monoclonal antibody at 1:1000 dilution and 4°C overnight incubation. Followed by conjugated secondary antibody incubation at r.t. for 60 min.