

bsm-62484R**[Primary Antibody]****BioSS**
ANTIBODIES

www.bioss.com.cn

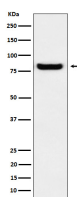
sales@bioss.com.cn

techsupport@bioss.com.cn

400-901-9800

Glucosidase 2 subunit beta Recombinant Rabbit mAb**— DATASHEET —**

Host: Rabbit	Isotype: IgG	Applications: WB (1:1000-2000) IHC-P (1:100-200) IHC-F (1:100-200) IF (1:50-200) ICC/IF (1:50-200) Reactivity: Human Predicted MW.: 59 Subcellular Location: Cytoplasm
Clonality: Recombinant		
GeneID: 5589	SWISS: P14314	
Target: Glucosidase 2 subunit beta		
Immunogen: A synthesized peptide derived from human Glucosidase 2 beta: 501-528.		
Purification: affinity purified by Protein A		
Storage: 10mM phosphate buffered saline(pH 7.4) with 150mM sodium chloride, 0.05% BSA, 0.02% Proclin300 and 50% glycerol. Store at 4°C for short term. Store at -20°C for long term. Avoid repeated freeze/thaw cycles.		
Background: Regulatory subunit of glucosidase II that cleaves sequentially the 2 innermost alpha-1,3-linked glucose residues from the Glc2Man9GlcNAc2 oligosaccharide precursor of immature glycoproteins. Required for efficient PKD1/Polycystin-1 biogenesis and trafficking to the plasma membrane of the primary cilia.		

— VALIDATION IMAGES —

Western blot analysis of A431 cell lysate. Using Glucosidase 2 subunit beta (bsm-62484R) monoclonal antibody at 1:1000 dilution and 4°C overnight incubation. Followed by conjugated secondary antibody incubation at r.t. for 60 min.