

**bsm-62481R****[ Primary Antibody ]****RGMA Recombinant Rabbit mAb****BioSS**  
**ANTIBODIES**

www.bioss.com.cn

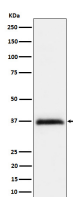
sales@bioss.com.cn

techsupport@bioss.com.cn

400-901-9800

**— DATASHEET —**

<b>Host:</b> Rabbit	<b>Isotype:</b> IgG	<b>Applications:</b> <b>WB</b> (1:1000-2000) <b>ICC/IF</b> (1:50-200)
<b>Clonality:</b> Recombinant		<b>Reactivity:</b> Human, Mouse, Rat
<b>GeneID:</b> 56963	<b>SWISS:</b> Q96B86	
<b>Target:</b> RGMA		
<b>Immunogen:</b> A synthesized peptide derived from human Repulsive guidance molecule A: 401-435.		<b>Predicted MW.:</b> 49
<b>Purification:</b> affinity purified by Protein A		<b>Subcellular Location:</b> Cell membrane
<b>Storage:</b> 10mM phosphate buffered saline(pH 7.4) with 150mM sodium chloride, 0.05% BSA, 0.02% Proclin300 and 50% glycerol. Store at 4°C for short term. Store at -20°C for long term. Avoid repeated freeze/thaw cycles.		
<b>Background:</b> Member of the repulsive guidance molecule (RGM) family that performs several functions in the developing and adult nervous system. Regulates cephalic neural tube closure, inhibits neurite outgrowth and cortical neuron branching, and the formation of mature synapses. Binding to its receptor NEO1/neogenin induces activation of RHOA-ROCK1/Rho-kinase signaling pathway through UNC5B-ARHGEF12/LARG-PTK2/FAK1 cascade, leading to collapse of the neuronal growth cone and neurite outgrowth inhibition.		

**— VALIDATION IMAGES —**

Western blot analysis of Hela cell lysate. Using RGMA (bsm-62481R) monoclonal antibody at 1:1000 dilution and 4°C overnight incubation. Followed by conjugated secondary antibody incubation at r.t. for 60 min.