

**bsm-62475R****[ Primary Antibody ]****HAPLN1 Recombinant Rabbit mAb****BioSS**  
**ANTIBODIES**

www.bioss.com.cn

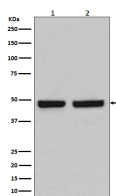
sales@bioss.com.cn

techsupport@bioss.com.cn

400-901-9800

**— DATASHEET —**

|  |                      |   |
|--|----------------------|---|
| <b>Host:</b> Rabbit  | <b>Isotype:</b> IgG  | <b>Applications:</b> <b>WB</b> (1:500-2000)<br><b>IHC-P</b> (1:50-200)<br><b>IHC-F</b> (1:50-200)<br><b>IF</b> (1:50-200)<br><b>ICC/IF</b> (1:50-200)<br><br><b>Reactivity:</b> Human, Mouse, Rat<br><br><br><b>Predicted MW.:</b> 40<br><br><b>Subcellular Location:</b> Cytoplasm |
| <b>Clonality:</b> Recombinant  |                      |   |
| <b>GeneID:</b> 1404  | <b>SWISS:</b> P10915 |   |
| <b>Target:</b> HAPLN1  |                      |   |
| <b>Immunogen:</b> A synthesized peptide derived from human HAPLN1: 303-354/354.  |                      |   |
| <b>Purification:</b> affinity purified by Protein A  |                      |   |
| <b>Storage:</b> 10mM phosphate buffered saline(pH 7.4) with 150mM sodium chloride, 0.05% BSA, 0.02% Proclin300 and 50% glycerol. Store at 4°C for short term. Store at -20°C for long term. Avoid repeated freeze/thaw cycles. |                      |   |
| <b>Background:</b> Stabilizes the aggregates of proteoglycan monomers with hyaluronic acid in the extracellular cartilage matrix.  |                      |   |

**— VALIDATION IMAGES —**

Western blot analysis of (1) Caco2 cell lysate; (2) Mouse spleen lysate. Using HAPLN1 (bsm-62475R) monoclonal antibody at 1:1000 dilution and 4°C overnight incubation. Followed by conjugated secondary antibody incubation at r.t. for 60 min.