

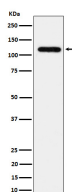
bsm-62465R**[Primary Antibody]****UBE4A Recombinant Rabbit mAb****BioSS**
ANTIBODIES

www.bioss.com.cn

sales@bioss.com.cn

techsupport@bioss.com.cn

400-901-9800

— DATASHEET —**Host:** Rabbit**Isotype:** IgG**Clonality:** Recombinant**GeneID:** 9354**SWISS:** Q14139**Target:** UBE4A**Immunogen:** A synthesized peptide derived from human UBE4A: 20-52.**Purification:** affinity purified by Protein A**Storage:** 10mM phosphate buffered saline(pH 7.4) with 150mM sodium chloride, 0.05% BSA, 0.02% Proclin300 and 50% glycerol. Store at 4°C for short term. Store at -20°C for long term. Avoid repeated freeze/thaw cycles.**Background:** Ubiquitin-protein ligase that probably functions as an E3 ligase in conjunction with specific E1 and E2 ligases. May also function as an E4 ligase mediating the assembly of polyubiquitin chains on substrates ubiquitinated by another E3 ubiquitin ligase. Mediates 'Lys-48'-linked polyubiquitination of substrates.**Applications:** **WB** (1:1000-2000)
Flow-Cyt (1:50-100)
ICC/IF (1:50-200)**Reactivity:** Human**Predicted MW.:** 123**— VALIDATION IMAGES —**

Western blot analysis of 293 cell lysate. Using UBE4A (bsm-62465R) monoclonal antibody at 1:1000 dilution and 4°C overnight incubation. Followed by conjugated secondary antibody incubation at r.t. for 60 min.