

**bsm-62462R****[ Primary Antibody ]****BioSS**  
ANTIBODIES

www.bioss.com.cn

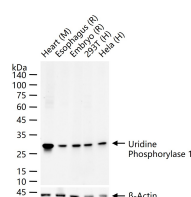
sales@bioss.com.cn

techsupport@bioss.com.cn

400-901-9800

**Uridine Phosphorylase 1 Recombinant Rabbit mAb****— DATASHEET —**

<b>Host:</b> Rabbit	<b>Isotype:</b> IgG	<b>Applications:</b> WB (1:500-2000)
<b>Clonality:</b> Recombinant		<b>Reactivity:</b> Human, Mouse, Rat
<b>GeneID:</b> 7378	<b>SWISS:</b> Q16831	
<b>Target:</b> Uridine Phosphorylase 1		
<b>Immunogen:</b> A synthesized peptide derived from human Uridine phosphorylase 1: 1-33.		<b>Predicted MW.:</b> 34
<b>Purification:</b> affinity purified by Protein A		<b>Subcellular Location:</b> Cytoplasm ,Nucleus
<b>Storage:</b> 10mM phosphate buffered saline(pH 7.4) with 150mM sodium chloride, 0.05% BSA, 0.02% Proclin300 and 50% glycerol. Store at 4°C for short term. Store at -20°C for long term. Avoid repeated freeze/thaw cycles.		
<b>Background:</b> Catalyzes the reversible phosphorylytic cleavage of uridine to uracil and ribose-1-phosphate which can then be utilized as carbon and energy sources or in the rescue of pyrimidine bases for nucleotide synthesis.		

**— VALIDATION IMAGES —**

25 ug total protein per lane of various lysates  
(see on figure) probed with Uridine  
Phosphorylase 1 monoclonal antibody,  
unconjugated (bsm-62462R) at 1:1000 dilution  
and 4°C overnight incubation. Followed by  
conjugated secondary antibody incubation at r.t.  
for 60 min.