

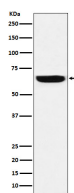
**bsm-62454R****[ Primary Antibody ]****GBP1 Recombinant Rabbit mAb****Bioss**  
**ANTIBODIES**

www.bioss.com.cn

sales@bioss.com.cn

techsupport@bioss.com.cn

400-901-9800

**— DATASHEET —****Host:** Rabbit**Isotype:** IgG**Clonality:** Recombinant**GeneID:** 2633**SWISS:** P32455**Target:** GBP1**Immunogen:** A synthesized peptide derived from human GBP1: 530-592.**Purification:** affinity purified by Protein A**Storage:** 10mM phosphate buffered saline(pH 7.4) with 150mM sodium chloride, 0.05% BSA, 0.02% Proclin300 and 50% glycerol.  
Store at 4°C for short term. Store at -20°C for long term. Avoid repeated freeze/thaw cycles.**Background:** Mediates the exchange of one Ca<sup>2+</sup> ion against three to four Na<sup>+</sup> ions across the cell membrane, and thereby contributes to the regulation of cytoplasmic Ca<sup>2+</sup> levels and Ca<sup>2+</sup>-dependent cellular processes.**Applications:** **WB** (1:1000-2000)**IHC-P** (1:100-200)**IHC-F** (1:100-200)**IF** (1:50-200)**ICC/IF** (1:50-200)**Reactivity:** Human**Predicted  
MW.:** 68**Subcellular  
Location:** Cell membrane**— VALIDATION IMAGES —**

Western blot analysis of HeLa cell lysate. Using GBP1 (bsm-62454R) monoclonal antibody at 1:1000 dilution and 4°C overnight incubation. Followed by conjugated secondary antibody incubation at r.t. for 60 min.