
Claudin 17 Rabbit pAb

Catalog Number: bs-13751R

Target Protein: Claudin 17

Concentration: 1mg/ml

Form: Liquid

Host: Rabbit

Clonality: Polyclonal

Isotype: IgG

Applications: IHC-P (1:100-500), IHC-F (1:100-500), IF (1:100-500)

Reactivity: Human (predicted:Horse)

Predicted MW: 25 kDa

Entrez Gene: 26285

Swiss Prot: P56750

Source: KLH conjugated synthetic peptide derived from human Claudin 17: 29-81/224.

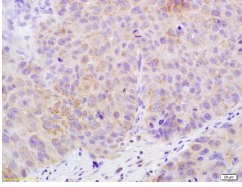
Purification: affinity purified by Protein A

Storage: 0.01M TBS (pH7.4) with 1% BSA, 0.02% Proclin300 and 50% Glycerol.

Shipped at 4°C. Store at -20°C for one year. Avoid repeated freeze/thaw cycles.

Background: The claudin superfamily consists of many structurally related proteins in humans. These proteins are important structural and functional components of tight junctions in paracellular transport. Claudins are located in both epithelial and endothelial cells in all tight junction-bearing tissues. Three classes of proteins are known to localize to tight junctions, including the claudins, Occludin and Junction adhesion molecules (JAMs). Claudins, which consist of four transmembrane domains and two extracellular loops make up tight junction strands. Emerging evidence suggests that the Claudin family of proteins regulates transport through tight junctions via differential discrimination for solute size and charge. Mammalian claudin-17 and claudin-8 may be the result of a gene duplication. Claudin-17 is expressed in stratum granulosum of the epidermis and infundibulum and predominantly localizes to the plasma membrane.

VALIDATION IMAGES



Tissue/cell: human bladder carcinoma; 4% Paraformaldehyde-fixed and paraffin-embedded; Antigen retrieval: citrate buffer (0.01M, pH 6.0), Boiling bathing for 15min; Block endogenous peroxidase by 3% Hydrogen peroxide for 30min; Blocking buffer (normal goat serum,C-0005) at 37°C for 20 min; Incubation: Anti-Claudin 17 Polyclonal Antibody, Unconjugated(bs-13751R) 1:200, overnight at 4°C, followed by conjugation to the secondary antibody(SP-0023) and DAB(C-0010) staining