

bsm-62446R**[Primary Antibody]****MRPL28 Recombinant Rabbit mAb****BioSS**
ANTIBODIES

www.bioss.com.cn

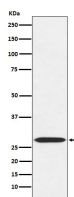
sales@bioss.com.cn

techsupport@bioss.com.cn

400-901-9800

— DATASHEET —

Host: Rabbit	Isotype: IgG	Applications: WB (1:1000-2000)
Clonality: Recombinant		Flow-Cyt (1:50-100)
GeneID: 10573	SWISS: Q13084	ICC/IF (1:50-200)
Target: MRPL28		IP (1:20-50)
Immunogen: A synthesized peptide derived from human MRPL28: 60-90.		Reactivity: Human, Mouse, Rat
Purification: affinity purified by Protein A		
Storage: 10mM phosphate buffered saline(pH 7.4) with 150mM sodium chloride, 0.05% BSA, 0.02% Proclin300 and 50% glycerol. Store at 4°C for short term. Store at -20°C for long term. Avoid repeated freeze/thaw cycles.		Predicted MW.: 30
Background: Potentially represents an important therapeutic reagent for HLA-A24 patients. This antigen is recognized by tumor-infiltrating lymphocyte (TIL) 1290 in the context of HLA-A24.		Subcellular Location: Cytoplasm

— VALIDATION IMAGES —

Western blot analysis of 293 cell lysate. Using MRPL28 (bsm-62446R) monoclonal antibody at 1:1000 dilution and 4°C overnight incubation. Followed by conjugated secondary antibody incubation at r.t. for 60 min.