

**bsm-62443R**

**[ Primary Antibody ]**

## UBE4B Recombinant Rabbit mAb

**BioSS**  
ANTIBODIES

www.bioss.com.cn

sales@bioss.com.cn

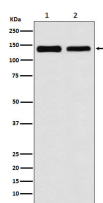
techsupport@bioss.com.cn

400-901-9800

### — DATASHEET —

<b>Host:</b> Rabbit	<b>Isotype:</b> IgG	<b>Applications:</b> WB (1:1000-2000)
<b>Clonality:</b> Recombinant		<b>Reactivity:</b> Human, Mouse, Rat
<b>GeneID:</b> 10277	<b>SWISS:</b> O95155	
<b>Target:</b> UBE4B		
<b>Immunogen:</b> A synthesized peptide derived from human UBE4B: 15-50.		<b>Predicted MW.:</b> 146
<b>Purification:</b> affinity purified by Protein A		
<b>Storage:</b> 10mM phosphate buffered saline(pH 7.4) with 150mM sodium chloride, 0.05% BSA, 0.02% Proclin300 and 50% glycerol. Store at 4°C for short term. Store at -20°C for long term. Avoid repeated freeze/thaw cycles.		
<b>Background:</b> Ubiquitin-protein ligase that probably functions as an E3 ligase in conjunction with specific E1 and E2 ligases.		

### — VALIDATION IMAGES —



Western blot analysis of (1) 293T cell lysate; (2) NIH/3T3 cell lysate. Using UBE4B (bsm-62443R) monoclonal antibody at 1:1000 dilution and 4°C overnight incubation. Followed by conjugated secondary antibody incubation at r.t. for 60 min.