

**bsm-62442R****[ Primary Antibody ]**

www.bioss.com.cn

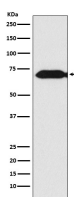
sales@bioss.com.cn

techsupport@bioss.com.cn

400-901-9800

**THEMIS Recombinant Rabbit mAb****— DATASHEET —**

<b>Host:</b> Rabbit	<b>Isotype:</b> IgG	<b>Applications:</b> <b>WB</b> (1:1000-2000) <b>Flow-Cyt</b> (1:50-100) <b>ICC/IF</b> (1:50-200) <b>IP</b> (1:20-50)  <b>Reactivity:</b> Human, Mouse, Rat  <b>Predicted MW.:</b> 73  <b>Subcellular Location:</b> Cytoplasm ,Nucleus
<b>Clonality:</b> Recombinant		
<b>GeneID:</b> 387357	<b>SWISS:</b> Q8N1K5	
<b>Target:</b> THEMIS		
<b>Immunogen:</b> A synthesized peptide derived from human THEMIS: 150-250.		
<b>Purification:</b> affinity purified by Protein A		
<b>Storage:</b> 10mM phosphate buffered saline(pH 7.4) with 150mM sodium chloride, 0.05% BSA, 0.02% Proclin300 and 50% glycerol. Store at 4°C for short term. Store at -20°C for long term. Avoid repeated freeze/thaw cycles.		
<b>Background:</b> Plays a central role in late thymocyte development by controlling both positive and negative T-cell selection. Required to sustain and/or integrate signals required for proper lineage commitment and maturation of T-cells. Regulates T-cell development through T-cell antigen receptor (TCR) signaling and in particular through the regulation of calcium influx and phosphorylation of Erk.		

**— VALIDATION IMAGES —**

Western blot analysis of Jurkat cell lysate. Using THEMIS (bsm-62442R) monoclonal antibody at 1:1000 dilution and 4°C overnight incubation. Followed by conjugated secondary antibody incubation at r.t. for 60 min.