

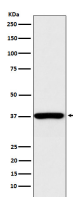
bsm-62441R**[Primary Antibody]****BioSS**
ANTIBODIES

www.bioss.com.cn

sales@bioss.com.cn

techsupport@bioss.com.cn

400-901-9800

QKI Recombinant Rabbit mAb**— DATASHEET —****Host:** Rabbit**Isotype:** IgG**Clonality:** Recombinant**GeneID:** 9444**SWISS:** Q96PU8**Target:** QKI**Immunogen:** A synthesized peptide derived from human QKI: 270-341.**Purification:** affinity purified by Protein A**Storage:** 10mM phosphate buffered saline(pH 7.4) with 150mM sodium chloride, 0.05% BSA, 0.02% Proclin300 and 50% glycerol. Store at 4°C for short term. Store at -20°C for long term. Avoid repeated freeze/thaw cycles.**Background:** RNA reader protein, which recognizes and binds specific RNAs, thereby regulating RNA metabolic processes, such as pre-mRNA splicing, circular RNA (circRNA) formation, mRNA export, mRNA stability and/or translation. Involved in various cellular processes, such as mRNA storage into stress granules, apoptosis, lipid deposition, interferon response, glial cell fate and development.**Applications:** **WB** (1:500-2000)**ICC/IF** (1:50-200)**IP** (1:20-50)**Reactivity:** Human, Mouse**Predicted
MW.:** 38**Subcellular
Location:** Cytoplasm ,Nucleus**— VALIDATION IMAGES —**

Western blot analysis of K562 cell lysate. Using QKI (bsm-62441R) monoclonal antibody at 1:1000 dilution and 4°C overnight incubation. Followed by conjugated secondary antibody incubation at r.t. for 60 min.