
NPY5R Rabbit pAb

Catalog Number: bs-11521R

Target Protein: NPY5R

Concentration: 1mg/ml

Form: Liquid

Host: Rabbit

Clonality: Polyclonal

Isotype: IgG

Applications: WB (1:500-2000)

Reactivity: Human, Mouse (predicted:Rabbit, Cow, Dog, Horse)

Predicted MW: 51 kDa

Entrez Gene: 4889

Swiss Prot: Q15761

Source: KLH conjugated synthetic peptide derived from human NPY5R: 1-100/445.

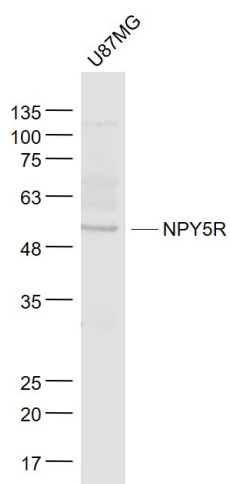
Purification: affinity purified by Protein A

Storage: 0.01M TBS (pH7.4) with 1% BSA, 0.02% Proclin300 and 50% Glycerol.

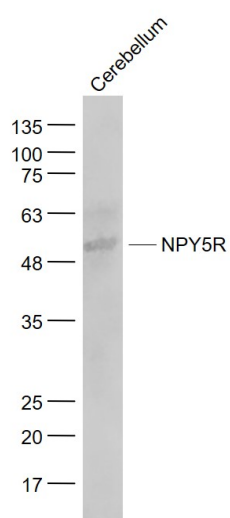
Shipped at 4°C. Store at -20°C for one year. Avoid repeated freeze/thaw cycles.

Background: Pancreatic polypeptide (PP), neuropeptide Y (NPY), and peptide YY (PYY) are related 36-amino acid hormones. A number of structurally related receptors for these peptides have been isolated, NPY1-R, NPY2-R, NPY3-R, NPY4-R, NPY5-R, and NPY6-R. NPY4-R is expressed in several human tissues, including brain, coronary artery, and ileum. NPY4-R maps to human chromosome 10q11.2. NPY-5R, isolated from rat hypothalamus, encodes a 456-amino acid protein with less than 35% overall identity to known Y-type receptors. The human NPY5-R sequence is nearly identical to, but in the opposite orientation from, that of the human NPY1-R sequence. NPY5-R localizes to the paraventricular hypothalamic nucleus, the lateral hypothalamus, and other locations consistent with a role in the control of feeding behavior. The gene which encodes NPY5-R maps to human chromosome 4q32.2. NPY6-R is abundantly expressed in human heart and skeletal muscle and the gene which encodes NPY6-R maps to human chromosome 5q31.

VALIDATION IMAGES



Sample: U87MG(Human) Cell Lysate at 30 ug Primary: Anti- NPY5R (bs-11521R) at 1/1000 dilution Secondary: IRDye800CW Goat Anti-Rabbit IgG at 1/20000 dilution Predicted band size: 51 kD Observed band size: 53 kD



Sample: Cerebellum (Mouse) Lysate at 40 ug Primary: Anti- NPY5R (bs-11521R) at 1/1000 dilution Secondary: IRDye800CW Goat Anti-Rabbit IgG at 1/20000 dilution Predicted band size: 51 kD Observed band size: 53 kD