

**bsm-62437R****[ Primary Antibody ]**

www.bioss.com.cn

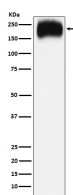
sales@bioss.com.cn

techsupport@bioss.com.cn

400-901-9800

**NPC1 Recombinant Rabbit mAb****— DATASHEET —**

<b>Host:</b> Rabbit	<b>Isotype:</b> IgG	<b>Applications:</b> WB (1:1000-2000) IHC-P (1:100-200) IHC-F (1:100-200) IF (1:50-200) Flow-Cyt (1:50-100) ICC/IF (1:50-200)  <b>Reactivity:</b> Human, Mouse, Rat   <b>Predicted MW.:</b> 142  <b>Subcellular Location:</b> Cell membrane ,Cytoplasm
<b>Clonality:</b> Recombinant		
<b>GeneID:</b> 4864	<b>SWISS:</b> O15118	
<b>Target:</b> NPC1		
<b>Immunogen:</b> A synthesized peptide derived from human Niemann pick C1: 1240-1278.		
<b>Purification:</b> affinity purified by Protein A		
<b>Storage:</b> 10mM phosphate buffered saline(pH 7.4) with 150mM sodium chloride, 0.05% BSA, 0.02% Proclin300 and 50% glycerol. Store at 4°C for short term. Store at -20°C for long term. Avoid repeated freeze/thaw cycles.		
<b>Background:</b> Intracellular cholesterol transporter which acts in concert with NPC2 and plays an important role in the egress of cholesterol from the endosomal/lysosomal compartment. Unesterified cholesterol that has been released from LDLs in the lumen of the late endosomes/lysosomes is transferred by NPC2 to the cholesterol-binding pocket in the N-terminal domain of NPC1.		

**— VALIDATION IMAGES —**

Western blot analysis of HepG2 cell lysate. Using NPC1 (bsm-62437R) monoclonal antibody at 1:1000 dilution and 4°C overnight incubation. Followed by conjugated secondary antibody incubation at r.t. for 60 min.