

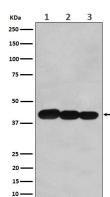
bsm-62428R**[Primary Antibody]****BCL2 like 14 Recombinant Rabbit mAb****BioSS**
ANTIBODIES

www.bioss.com.cn

sales@bioss.com.cn

techsupport@bioss.com.cn

400-901-9800

— DATASHEET —**Host:** Rabbit**Isotype:** IgG**Clonality:** Recombinant**GeneID:** 79370**SWISS:** Q9BZR8**Target:** BCL2 like 14**Immunogen:** A synthesized peptide derived from human Bcl 2 L14: 1-250/327.**Purification:** affinity purified by Protein A**Storage:** 10mM phosphate buffered saline(pH 7.4) with 150mM sodium chloride, 0.05% BSA, 0.02% Proclin300 and 50% glycerol.
Store at 4°C for short term. Store at -20°C for long term. Avoid repeated freeze/thaw cycles.**Background:** Plays a role in apoptosis.**Applications:** **WB** (1:500-2000)**IHC-P** (1:50-200)**IHC-F** (1:50-200)**IF** (1:50-200)**Flow-Cyt** (1:50-100)**ICC/IF** (1:50-200)**IP** (1:20-50)**Reactivity:** Human, Mouse, Rat**Predicted
MW.:** 37**Subcellular
Location:** Cell membrane ,Cytoplasm**— VALIDATION IMAGES —**

Western blot analysis of (1) Hela cell lysate; (2) NIH/3T3 cell lysate; (3) PC12 cell lysate. Using BCL2 like 14 (bsm-62428R) monoclonal antibody at 1:1000 dilution and 4°C overnight incubation. Followed by conjugated secondary antibody incubation at r.t. for 60 min.