

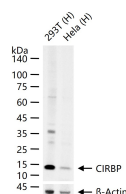
bsm-62427R**[Primary Antibody]****CIRBP Recombinant Rabbit mAb****Bioss**
ANTIBODIES

www.bioss.com.cn

sales@bioss.com.cn

techsupport@bioss.com.cn

400-901-9800

— DATASHEET —**Host:** Rabbit**Isotype:** IgG**Clonality:** Recombinant**CloneNo.:** 4G3**GeneID:** 1153**SWISS:** Q14011**Target:** CIRBP**Immunogen:** A synthesized peptide derived from human CIRBP: 1-172.**Purification:** affinity purified by Protein A**Storage:** 10mM phosphate buffered saline(pH 7.4) with 150mM sodium chloride, 0.05% BSA, 0.02% Proclin300 and 50% glycerol. Store at 4°C for short term. Store at -20°C for long term. Avoid repeated freeze/thaw cycles.**Background:** Cold-inducible mRNA binding protein that plays a protective role in the genotoxic stress response by stabilizing transcripts of genes involved in cell survival. Acts as a translational activator.**Applications:** **WB** (1:500-2000)**IHC-P** (1:100-500)**IHC-F** (1:100-500)**IF** (1:100-500)**ICC/IF** (1:50-200)**IP** (1:20-50)**Reactivity:** Human**Predicted
MW.:** 19**Subcellular
Location:** Cytoplasm ,Nucleus**— VALIDATION IMAGES —**

25 ug total protein per lane of various lysates (see on figure) probed with CIRBP monoclonal antibody, unconjugated (bsm-62427R) at 1:1000 dilution and 4°C overnight incubation. Followed by conjugated secondary antibody incubation at r.t. for 60 min.