

bsm-62426R**[Primary Antibody]**

www.bioss.com.cn

sales@bioss.com.cn

techsupport@bioss.com.cn

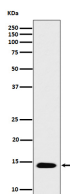
400-901-9800

Acetyl-Histone H2B type 2E (Lys16) Recombinant Rabbit mAb

— DATASHEET —

Host: Rabbit**Isotype:** IgG**Clonality:** Recombinant**GeneID:** 8349**SWISS:** Q16778**Target:** Acetyl-Histone H2B type 2E (Lys16)**Immunogen:** A synthesized peptide derived from human Histone H2B type 2E around the acetylation site of K16: SK-K(Ac)-AVT.**Purification:** affinity purified by Protein A**Storage:** 10mM phosphate buffered saline(pH 7.4) with 150mM sodium chloride, 0.05% BSA, 0.02% Proclin300 and 50% glycerol. Store at 4°C for short term. Store at -20°C for long term. Avoid repeated freeze/thaw cycles.**Background:** Core component of nucleosome. Nucleosomes wrap and compact DNA into chromatin, limiting DNA accessibility to the cellular machineries which require DNA as a template. Histones thereby play a central role in transcription regulation, DNA repair, DNA replication and chromosomal stability. DNA accessibility is regulated via a complex set of post-translational modifications of histones, also called histone code, and nucleosome remodeling.**Applications:** WB (1:1000-2000)**IHC-P** (1:100-200)**IHC-F** (1:100-200)**IF** (1:50-200)**ICC/IF** (1:50-200)**IP** (1:20-50)**ChIP** (1:20-50)**Reactivity:** Human, Mouse**Predicted MW.:** 14

— VALIDATION IMAGES —



Western blot analysis of HeLa treated with Trichostatin A cell lysate. Using Acetyl-Histone H2B type 2E (Lys16) (bsm-62426R) monoclonal antibody at 1:1000 dilution and 4°C overnight incubation. Followed by conjugated secondary antibody incubation at r.t. for 60 min.