

bsm-62425R**[Primary Antibody]****Bioss**
ANTIBODIES

www.bioss.com.cn

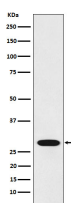
sales@bioss.com.cn

techsupport@bioss.com.cn

400-901-9800

RCHY1 Recombinant Rabbit mAb**— DATASHEET —**

Host: Rabbit	Isotype: IgG	Applications: WB (1:500-2000) ICC/IF (1:50-200) IP (1:20-50) Reactivity: Human, Mouse Predicted MW.: 30 Subcellular Location: Nucleus
Clonality: Recombinant		
GeneID: 25898	SWISS: Q96PM5	
Target: RCHY1		
Immunogen: A synthesized peptide derived from human RCHY1: 160-261.		
Purification: affinity purified by Protein A		
Storage: 10mM phosphate buffered saline(pH 7.4) with 150mM sodium chloride, 0.05% BSA, 0.02% Proclin300 and 50% glycerol. Store at 4°C for short term. Store at -20°C for long term. Avoid repeated freeze/thaw cycles.		
Background: E3 ubiquitin-protein ligase that mediates ubiquitination of target proteins, including p53/TP53, TP73, HDAC1 and CDKN1B.		

— VALIDATION IMAGES —

Western blot analysis of 293 cell lysate. Using RCHY1 (bsm-62425R) monoclonal antibody at 1:1000 dilution and 4°C overnight incubation. Followed by conjugated secondary antibody incubation at r.t. for 60 min.