

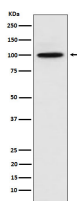
**bsm-62420R****[ Primary Antibody ]****Catenin alpha 3 Recombinant Rabbit mAb****BioSS**  
**ANTIBODIES**

www.bioss.com.cn

sales@bioss.com.cn

techsupport@bioss.com.cn

400-901-9800

**— DATASHEET —****Host:** Rabbit**Isotype:** IgG**Clonality:** Recombinant**GeneID:** 29119**SWISS:** Q9UI47**Target:** Catenin alpha 3**Immunogen:** A synthesized peptide derived from human Catenin alpha 3: 700-895/895.**Purification:** affinity purified by Protein A**Storage:** 10mM phosphate buffered saline(pH 7.4) with 150mM sodium chloride, 0.05% BSA, 0.02% Proclin300 and 50% glycerol. Store at 4°C for short term. Store at -20°C for long term. Avoid repeated freeze/thaw cycles.**Background:** May be involved in formation of stretch-resistant cell-cell adhesion complexes.**Applications:** **WB** (1:500-2000)**IHC-P** (1:100-200)**IHC-F** (1:100-200)**IF** (1:100-200)**IP** (1:20-50)**Reactivity:** Human, Mouse, Rat**Predicted MW.:** 100**— VALIDATION IMAGES —**

Western blot analysis of 293 cell lysate. Using Catenin alpha 3 (bsm-62420R) monoclonal antibody at 1:1000 dilution and 4°C overnight incubation. Followed by conjugated secondary antibody incubation at r.t. for 60 min.