

bsm-62417R**[Primary Antibody]****BioSS**
ANTIBODIES

www.bioss.com.cn

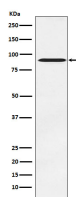
sales@bioss.com.cn

techsupport@bioss.com.cn

400-901-9800

ATRIP Recombinant Rabbit mAb**— DATASHEET —**

Host: Rabbit	Isotype: IgG	Applications: WB (1:1000-2000) ICC/IF (1:50-200)
Clonality: Recombinant		Reactivity: Human, Mouse, Rat
GeneID: 84126	SWISS: Q8WXE1	
Target: ATRIP		
Immunogen: A synthesized peptide derived from human ATR interacting protein: 202-250.		Predicted MW.: 86
Purification: affinity purified by Protein A		Subcellular Location: Nucleus
Storage: 10mM phosphate buffered saline(pH 7.4) with 150mM sodium chloride, 0.05% BSA, 0.02% Proclin300 and 50% glycerol. Store at 4°C for short term. Store at -20°C for long term. Avoid repeated freeze/thaw cycles.		
Background: Required for checkpoint signaling after DNA damage. Required for ATR expression, possibly by stabilizing the protein.		

— VALIDATION IMAGES —

Western blot analysis of PC-3 cell lysate. Using ATRIP (bsm-62417R) monoclonal antibody at 1:1000 dilution and 4°C overnight incubation. Followed by conjugated secondary antibody incubation at r.t. for 60 min.