

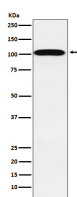
bsm-62415R**[Primary Antibody]****BioSS**
ANTIBODIES

www.bioss.com.cn

sales@bioss.com.cn

techsupport@bioss.com.cn

400-901-9800

ATP1A2 Recombinant Rabbit mAb**— DATASHEET —****Host:** Rabbit**Isotype:** IgG**Clonality:** Recombinant**GeneID:** 477**SWISS:** P50993**Target:** ATP1A2**Immunogen:** A synthesized peptide derived from human ATP1A2: 50-87.**Purification:** affinity purified by Protein A**Storage:** 10mM phosphate buffered saline(pH 7.4) with 150mM sodium chloride, 0.05% BSA, 0.02% Proclin300 and 50% glycerol.
Store at 4°C for short term. Store at -20°C for long term. Avoid repeated freeze/thaw cycles.**Background:** This is the catalytic component of the active enzyme, which catalyzes the hydrolysis of ATP coupled with the exchange of sodium and potassium ions across the plasma membrane. This action creates the electrochemical gradient of sodium and potassium, providing the energy for active transport of various nutrients.**Applications:** WB (1:1000-2000)**Reactivity:** Human, Mouse, Rat**Predicted
MW.:** 112**Subcellular
Location:** Cell membrane**— VALIDATION IMAGES —**

Western blot analysis of Human fetal heart lysate. Using ATP1A2 (bsm-62415R) monoclonal antibody at 1:1000 dilution and 4°C overnight incubation. Followed by conjugated secondary antibody incubation at r.t. for 60 min.