

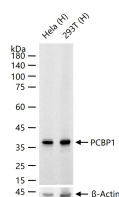
bsm-62413R**[Primary Antibody]****BioSS**
ANTIBODIES

www.bioss.com.cn

sales@bioss.com.cn

techsupport@bioss.com.cn

400-901-9800

PCBP1 Recombinant Rabbit mAb**— DATASHEET —****Host:** Rabbit**Isotype:** IgG**Clonality:** Recombinant**CloneNo.:** 8E11**GeneID:** 5093**SWISS:** Q15365**Target:** PCBP1**Immunogen:** A synthesized peptide derived from human PCBP1: 11-65.**Purification:** affinity purified by Protein A**Storage:** 10mM phosphate buffered saline(pH 7.4) with 150mM sodium chloride, 0.05% BSA, 0.02% Proclin300 and 50% glycerol. Store at 4°C for short term. Store at -20°C for long term. Avoid repeated freeze/thaw cycles.**Background:** Single-stranded nucleic acid binding protein that binds preferentially to oligo dC. Together with PCBP2, required for erythropoiesis, possibly by regulating mRNA splicing (By similarity).**Applications:** **WB** (1:500-2000)
IP (1:20-50)**Reactivity:** Human, Mouse, Rat**Predicted
MW.:** 37**Subcellular
Location:** Cytoplasm ,Nucleus**— VALIDATION IMAGES —**

25 ug total protein per lane of various lysates (see on figure) probed with PCBP1 monoclonal antibody, unconjugated (bsm-62413R) at 1:2000 dilution and 4°C overnight incubation. Followed by conjugated secondary antibody incubation at r.t. for 60 min.