

bsm-62411R**[Primary Antibody]**

www.bioss.com.cn

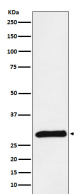
sales@bioss.com.cn

techsupport@bioss.com.cn

400-901-9800

PRSS2 Recombinant Rabbit mAb**— DATASHEET —**

Host: Rabbit	Isotype: IgG	Applications: WB (1:1000-2000)
Clonality: Recombinant		Reactivity: Human, Mouse, Rat
GeneID: 5645	SWISS: P07478	
Target: PRSS2		
Immunogen: A synthesized peptide derived from human Trypsin 2: 1-81.		Predicted MW.: 26
Purification: affinity purified by Protein A		Subcellular Location: Secreted ,Extracellular matrix
Storage: 10mM phosphate buffered saline(pH 7.4) with 150mM sodium chloride, 0.05% BSA, 0.02% Proclin300 and 50% glycerol. Store at 4°C for short term. Store at -20°C for long term. Avoid repeated freeze/thaw cycles.		
Background: Part of the insoluble cornified cell envelope (CE) of stratified squamous epithelia.		

— VALIDATION IMAGES —

Western blot analysis of Human pancreas lysate.
Using PRSS2 (bsm-62411R) monoclonal antibody at 1:1000 dilution and 4°C overnight incubation. Followed by conjugated secondary antibody incubation at r.t. for 60 min.