

bsm-62403R**[Primary Antibody]****Collagen XI alpha 1 Recombinant Rabbit mAb****Bioss**
ANTIBODIES

www.bioss.com.cn

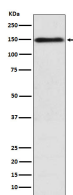
sales@bioss.com.cn

techsupport@bioss.com.cn

400-901-9800

— DATASHEET —

Host: Rabbit	Isotype: IgG	Applications: WB (1:1000-2000)
Clonality: Recombinant		Reactivity: Human
GeneID: 1301	SWISS: P12107	
Target: Collagen XI alpha 1		
Immunogen: A synthesized peptide derived from human Collagen XI alpha 1: 510-575.		Predicted MW.: 181
Purification: affinity purified by Protein A		Subcellular Location: Secreted
Storage: 10mM phosphate buffered saline(pH 7.4) with 150mM sodium chloride, 0.05% BSA, 0.02% Proclin300 and 50% glycerol. Store at 4°C for short term. Store at -20°C for long term. Avoid repeated freeze/thaw cycles.		
Background: May play an important role in fibrillogenesis by controlling lateral growth of collagen II fibrils.		

— VALIDATION IMAGES —

Western blot analysis of K562 cell lysate. Using Collagen XI alpha 1 (bsm-62403R) monoclonal antibody at 1:1000 dilution and 4°C overnight incubation. Followed by conjugated secondary antibody incubation at r.t. for 60 min.