

**bsm-60478R****[ Primary Antibody ]**

www.bioss.com.cn

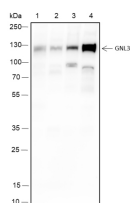
sales@bioss.com.cn

techsupport@bioss.com.cn

400-901-9800

**MPP8 Recombinant Rabbit mAb****— DATASHEET —**

<b>Host:</b> Rabbit	<b>Isotype:</b> IgG/Kappa	<b>Applications:</b> WB (1:500-1000)  <b>Reactivity:</b> Mouse  <b>Subcellular Location:</b> Nucleus
<b>Clonality:</b> Recombinant	<b>CloneNo.:</b> H12G4	
<b>Target:</b> MPP8		
<b>Purification:</b> affinity purified by Protein A		
<b>Concentration:</b> 1mg/ml		
<b>Storage:</b> 0.01M TBS (pH7.4) with 1% BSA, 0.02% Proclin300 and 50% Glycerol. Shipped at 4°C. Store at -20°C for one year. Avoid repeated freeze/thaw cycles.		
<b>Background:</b> MPHOSPH8 is a 860 amino acid nuclear protein that is phosphorylated in the M (mitotic) phase of the cell cycle. MPHOSPH8 contains four ANK repeats, motifs that are typically found in transcriptional regulators and cell cycle proteins and may be involved in protein-protein binding. Due to evidence suggesting that MPHOSPH8 forms a complex with Muskelein and Ran BP-M, a GTPase implicated in a diverse array of cellular processes, it may play a role in the Ran GTPase cycle. The gene encoding MPHOSPH8 resides on chromosome 13. There are two isoforms of MPHOSPH8 that are produced as a result of alternative splicing events.		

**— VALIDATION IMAGES —**

Blocking buffer: 5% NFDm/TBST Primary ab  
dilution: 1:1000 Primary ab incubation  
condition: room temperature 2h Secondary ab:  
Goat Anti-Mouse IgG H&L (HRP) Lysate: 1: MEF, 2:  
Mouse E12 brain, 3: 4T1, 4: F9 Protein loading  
quantity: 20 µg Exposure time: 30 s Predicted  
MW: 110 kDa Observed MW: 125 kDa