

bsm-62397R**[Primary Antibody]****BioSS**
ANTIBODIES

www.bioss.com.cn

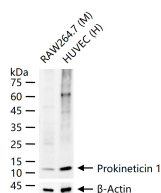
sales@bioss.com.cn

techsupport@bioss.com.cn

400-901-9800

Prokineticin 1 Recombinant Rabbit mAb**— DATASHEET —**

Host: Rabbit	Isotype: IgG	Applications: WB (1:500-2000) Flow-Cyt (1:50-100)
Clonality: Recombinant		Reactivity: Human, Mouse
GeneID: 84432	SWISS: P58294	
Target: Prokineticin 1		
Immunogen: A synthesized peptide derived from human PROK1: 1-105.		
Purification: affinity purified by Protein A		Predicted MW.: 12
Storage: 10mM phosphate buffered saline(pH 7.4) with 150mM sodium chloride, 0.05% BSA, 0.02% Proclin300 and 50% glycerol. Store at 4°C for short term. Store at -20°C for long term. Avoid repeated freeze/thaw cycles.		Subcellular Location: Secreted
Background: Potently contracts gastrointestinal (GI) smooth muscle. Induces proliferation, migration and fenestration (the formation of membrane discontinuities) in capillary endothelial cells derived from endocrine glands.		

— VALIDATION IMAGES —

25 ug total protein per lane of various lysates
(see on figure) probed with Prokineticin 1
monoclonal antibody, unconjugated
(bsm-62397R) at 1:1000 dilution and 4°C
overnight incubation. Followed by conjugated
secondary antibody incubation at r.t. for 60 min.