

bsm-62396R**[Primary Antibody]****Bioss**
ANTIBODIES

www.bioss.com.cn

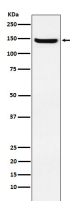
sales@bioss.com.cn

techsupport@bioss.com.cn

400-901-9800

Jagged 2 Recombinant Rabbit mAb**— DATASHEET —**

Host: Rabbit	Isotype: IgG	Applications: WB (1:1000-2000)
Clonality: Recombinant		Reactivity: Human, Mouse
GeneID: 3714	SWISS: Q9Y219	
Target: Jagged 2		
Immunogen: A synthesized peptide derived from human Jagged 2: 25-89.		Predicted MW.: 133
Purification: affinity purified by Protein A		Subcellular Location: Cell membrane
Storage: 10mM phosphate buffered saline(pH 7.4) with 150mM sodium chloride, 0.05% BSA, 0.02% Proclin300 and 50% glycerol. Store at 4°C for short term. Store at -20°C for long term. Avoid repeated freeze/thaw cycles.		
Background: Putative Notch ligand involved in the mediation of Notch signaling. Involved in limb development.		

— VALIDATION IMAGES —

Western blot analysis of HUVEC cell lysate. Using Jagged 2 (bsm-62396R) monoclonal antibody at 1:1000 dilution and 4°C overnight incubation. Followed by conjugated secondary antibody incubation at r.t. for 60 min.