

bsm-62393R**[Primary Antibody]**

www.bioss.com.cn

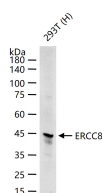
sales@bioss.com.cn

techsupport@bioss.com.cn

400-901-9800

ERCC8 Recombinant Rabbit mAb**— DATASHEET —**

| | | |
|---|-----------------------|--|
| Host: Rabbit | Isotype: IgG | Applications: WB (1:500-2000) IP (1:20-50) Reactivity: Human Predicted MW.: 44 Subcellular Location: Nucleus |
| Clonality: Recombinant | CloneNo.: 18F8 | |
| GeneID: 1161 | SWISS: Q13216 | |
| Target: ERCC8 | | |
| Immunogen: A synthesized peptide derived from human ERCC8: 351-396. | | |
| Purification: affinity purified by Protein A | | |
| Storage: 10mM phosphate buffered saline(pH 7.4) with 150mM sodium chloride, 0.05% BSA, 0.02% Proclin300 and 50% glycerol. Store at 4°C for short term. Store at -20°C for long term. Avoid repeated freeze/thaw cycles. | | |
| Background: Substrate-recognition component of the CSA complex, a DCX (DDB1-CUL4-X-box) E3 ubiquitin-protein ligase complex, involved in transcription-coupled nucleotide excision repair. The CSA complex (DCX(ERCC8) complex) promotes the ubiquitination and subsequent proteasomal degradation of ERCC6 in a UV-dependent manner; ERCC6 degradation is essential for the recovery of RNA synthesis after transcription-coupled repair. | | |

— VALIDATION IMAGES —

25 ug total protein per lane of various lysates (see on figure) probed with ERCC8 monoclonal antibody, unconjugated (bsm-62393R) at 1:1000 dilution and 4°C overnight incubation. Followed by conjugated secondary antibody incubation at r.t. for 60 min.