

bsm-62389R**[Primary Antibody]**

www.bioss.com.cn

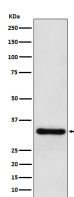
sales@bioss.com.cn

techsupport@bioss.com.cn

400-901-9800

PITX3 Recombinant Rabbit mAb**— DATASHEET —**

Host: Rabbit	Isotype: IgG	Applications: WB (1:1000-2000)
Clonality: Recombinant		Flow-Cyt (1:50-100)
GeneID: 5309	SWISS: O75364	IP (1:20-50)
Target: PITX3		Reactivity: Human, Mouse, Rat
Immunogen: A synthesized peptide derived from human Pituitary homeobox 3: 13-69.		
Purification: affinity purified by Protein A		Predicted MW.: 32
Storage: 10mM phosphate buffered saline(pH 7.4) with 150mM sodium chloride, 0.05% BSA, 0.02% Proclin300 and 50% glycerol. Store at 4°C for short term. Store at -20°C for long term. Avoid repeated freeze/thaw cycles.		Subcellular Location: Nucleus
Background: Transcriptional regulator which is important for the differentiation and maintenance of meso-diencephalic dopaminergic (mdDA) neurons during development. In addition to its importance during development, it also has roles in the long-term survival and maintenance of the mdDA neurons. Activates NR4A2/NURR1-mediated transcription of genes such as SLC6A3, SLC18A2, TH and DRD2 which are essential for development of mdDA neurons.		

— VALIDATION IMAGES —

Western blot analysis of U87-MG cell lysate.
Using PITX3 (bsm-62389R) monoclonal antibody
at 1:1000 dilution and 4°C overnight incubation.
Followed by conjugated secondary antibody
incubation at r.t. for 60 min.