

**bsm-62387R****[ Primary Antibody ]****Bioss**  
ANTIBODIES

www.bioss.com.cn

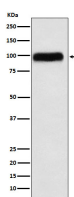
sales@bioss.com.cn

techsupport@bioss.com.cn

400-901-9800

**C1 Inactivator Recombinant Rabbit mAb****— DATASHEET —**

<b>Host:</b> Rabbit	<b>Isotype:</b> IgG	<b>Applications:</b> <b>WB</b> (1:500-2000) <b>IP</b> (1:20-50)  <b>Reactivity:</b> Human, Mouse, Rat   <b>Predicted MW.:</b> 55  <b>Subcellular Location:</b> Secreted
<b>Clonality:</b> Recombinant		
<b>GeneID:</b> 710	<b>SWISS:</b> P05155	
<b>Target:</b> C1 Inactivator		
<b>Immunogen:</b> A synthesized peptide derived from human Serpin G1: 150-230.		
<b>Purification:</b> affinity purified by Protein A		
<b>Storage:</b> 10mM phosphate buffered saline(pH 7.4) with 150mM sodium chloride, 0.05% BSA, 0.02% Proclin300 and 50% glycerol. Store at 4°C for short term. Store at -20°C for long term. Avoid repeated freeze/thaw cycles.		
<b>Background:</b> Activation of the C1 complex is under control of the C1-inhibitor. It forms a proteolytically inactive stoichiometric complex with the C1r or C1s proteases. May play a potentially crucial role in regulating important physiological pathways including complement activation, blood coagulation, fibrinolysis and the generation of kinins.		

**— VALIDATION IMAGES —**

Western blot analysis of Human plasma lysate.  
Using C1 Inactivator (bsm-62387R) monoclonal antibody at 1:1000 dilution and 4°C overnight incubation. Followed by conjugated secondary antibody incubation at r.t. for 60 min.