

bsm-62384R**[Primary Antibody]****BioSS**
ANTIBODIES

www.bioss.com.cn

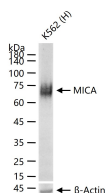
sales@bioss.com.cn

techsupport@bioss.com.cn

400-901-9800

MICA Recombinant Rabbit mAb**— DATASHEET —**

Host: Rabbit	Isotype: IgG	Applications: WB (1:500-2000)
Clonality: Recombinant	CloneNo.: 18A14	Reactivity: Human
GeneID: 100507436	SWISS: Q29983	
Target: MICA		
Immunogen: A synthesized peptide derived from human MIC A: 80-134.		Predicted MW.: 43
Purification: affinity purified by Protein A		Subcellular Location: Cell membrane ,Cytoplasm
Storage: 10mM phosphate buffered saline(pH 7.4) with 150mM sodium chloride, 0.05% BSA, 0.02% Proclin300 and 50% glycerol. Store at 4°C for short term. Store at -20°C for long term. Avoid repeated freeze/thaw cycles.		
Background: Seems to have no role in antigen presentation. Acts as a stress-induced self-antigen that is recognized by gamma delta T-cells. Ligand for the KLRK1/NKG2D receptor. Binding to KLRK1 leads to cell lysis.		

— VALIDATION IMAGES —

25 ug total protein per lane of various lysates (see on figure) probed with MICA monoclonal antibody, unconjugated (bsm-62384R) at 1:1000 dilution and 4°C overnight incubation. Followed by conjugated secondary antibody incubation at r.t. for 60 min.