

bsm-62383R**[Primary Antibody]****NPRB Recombinant Rabbit mAb****BioSS**
ANTIBODIES

www.bioss.com.cn

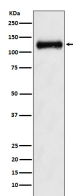
sales@bioss.com.cn

techsupport@bioss.com.cn

400-901-9800

— DATASHEET —

| | | |
|--|----------------------|--|
| Host: Rabbit | Isotype: IgG | Applications: WB (1:1000-2000) |
| Clonality: Recombinant | | Reactivity: Human, Mouse, Rat |
| GeneID: 4882 | SWISS: P20594 | |
| Target: NPRB | | |
| Immunogen: A synthesized peptide derived from human NPR2: 801-856. | | Predicted MW.: 117 |
| Purification: affinity purified by Protein A | | Subcellular Location: Cell membrane |
| Storage: 10mM phosphate buffered saline(pH 7.4) with 150mM sodium chloride, 0.05% BSA, 0.02% Proclin300 and 50% glycerol. Store at 4°C for short term. Store at -20°C for long term. Avoid repeated freeze/thaw cycles. | | |
| Background: Receptor for the C-type natriuretic peptide NPPC/CNP hormone. Has guanylate cyclase activity upon binding of its ligand. May play a role in the regulation of skeletal growth. | | |

— VALIDATION IMAGES —

Western blot analysis of Human fetal kidney lysate. Using NPRB (bsm-62383R) monoclonal antibody at 1:1000 dilution and 4°C overnight incubation. Followed by conjugated secondary antibody incubation at r.t. for 60 min.