

bsm-62379R**[Primary Antibody]****SMG1 Recombinant Rabbit mAb****BioSS**
ANTIBODIES

www.bioss.com.cn

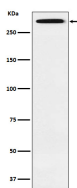
sales@bioss.com.cn

techsupport@bioss.com.cn

400-901-9800

— DATASHEET —

Host: Rabbit	Isotype: IgG	Applications: WB (1:500-2000)
Clonality: Recombinant		Reactivity: Human, Mouse, Rat
GeneID: 23049	SWISS: Q96Q15	
Target: SMG1		
Immunogen: A synthesized peptide derived from human SMG1: 3600-3661.		Predicted MW.: 411
Purification: affinity purified by Protein A		Subcellular Location: Cytoplasm ,Nucleus
Storage: 10mM phosphate buffered saline(pH 7.4) with 150mM sodium chloride, 0.05% BSA, 0.02% Proclin300 and 50% glycerol. Store at 4°C for short term. Store at -20°C for long term. Avoid repeated freeze/thaw cycles.		
Background: Serine/threonine protein kinase involved in both mRNA surveillance and genotoxic stress response pathways. Recognizes the substrate consensus sequence [ST]-Q. Plays a central role in nonsense-mediated decay (NMD) of mRNAs containing premature stop codons by phosphorylating UPF1/RENT1. Recruited by release factors to stalled ribosomes together with SMG8 and SMG9 (forming the SMG1C protein kinase complex), and UPF1 to form the transient SURF (SMG1-UPF1-eRF1-eRF3) complex.		

— VALIDATION IMAGES —

Western blot analysis of Saos2 cell lysate. Using SMG1 (bsm-62379R) monoclonal antibody at 1:1000 dilution and 4°C overnight incubation. Followed by conjugated secondary antibody incubation at r.t. for 60 min.