

bsm-62376R**[Primary Antibody]**

www.bioss.com.cn

sales@bioss.com.cn

techsupport@bioss.com.cn

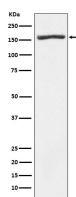
400-901-9800

Nidogen Recombinant Rabbit mAb

— DATASHEET —

Host: Rabbit	Isotype: IgG	Applications: WB (1:500-2000)
Clonality: Recombinant		Reactivity: Human
GeneID: 4811	SWISS: P14543	
Target: Nidogen		
Immunogen: A synthesized peptide derived from human Nidogen 1: 58-110.		Predicted MW.: 136
Purification: affinity purified by Protein A		Subcellular Location: Secreted ,Extracellular
Storage: 10mM phosphate buffered saline(pH 7.4) with 150mM sodium chloride, 0.05% BSA, 0.02% Proclin300 and 50% glycerol. Store at 4°C for short term. Store at -20°C for long term. Avoid repeated freeze/thaw cycles.		
Background: Sulfated glycoprotein widely distributed in basement membranes and tightly associated with laminin. Also binds to collagen IV and perlecan. It probably has a role in cell-extracellular matrix interactions.		

— VALIDATION IMAGES —



Western blot analysis of Human fetal heart lysate. Using Nidogen (bsm-62376R) monoclonal antibody at 1:1000 dilution and 4°C overnight incubation. Followed by conjugated secondary antibody incubation at r.t. for 60 min.