

bsm-62371R**[Primary Antibody]****beta glucuronidase Recombinant Rabbit mAb****BioSS**
ANTIBODIES

www.bioss.com.cn

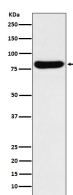
sales@bioss.com.cn

techsupport@bioss.com.cn

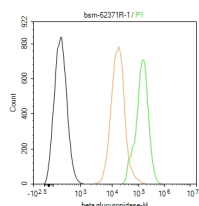
400-901-9800

— DATASHEET —

Host: Rabbit	Isotype: IgG	Applications: WB (1:500-2000) Flow-Cyt (1:50-100)
Clonality: Recombinant		Reactivity: Human
GeneID: 2990	SWISS: P08236	
Target: beta glucuronidase		
Immunogen: A synthesized peptide derived from human beta Glucuronidase: 50-94.		Predicted MW.: 75
Purification: affinity purified by Protein A		Subcellular Location: Cytoplasm
Storage: 10mM phosphate buffered saline(pH 7.4) with 150mM sodium chloride, 0.05% BSA, 0.02% Proclin300 and 50% glycerol. Store at 4°C for short term. Store at -20°C for long term. Avoid repeated freeze/thaw cycles.		
Background: Plays an important role in the degradation of dermatan and keratan sulfates.		

— VALIDATION IMAGES —

Western blot analysis of K562 cell lysate. Using beta glucuronidase (bsm-62371R) monoclonal antibody at 1:1000 dilution and 4°C overnight incubation. Followed by conjugated secondary antibody incubation at r.t. for 60 min.



The HelpG2 (H) cells were fixed with 4% PFA (10 min at r.t.) and then permeabilized with 90% ice-cold methanol for 20 min at -20°C, the cells then were incubated in 5% BSA to block non-specific protein-protein interactions (30 min at r.t.), followed by secondary antibody incubation for 40 min at room temperature. Primary Antibody (green): Rabbit Anti-beta glucuronidase antibody (bsm-62371R, 1:100); Isotype Control (orange): Rabbit IgG (bs-0295P). Blank control (black): PBS. Acquisition of 20,000 events was performed.