

**bsm-60489R****[ Primary Antibody ]****Bioss**  
ANTIBODIES

www.bioss.com.cn

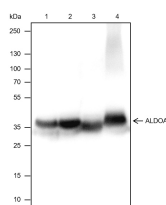
sales@bioss.com.cn

techsupport@bioss.com.cn

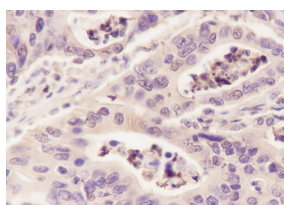
400-901-9800

**ALDOA Recombinant Rabbit mAb****— DATASHEET —**

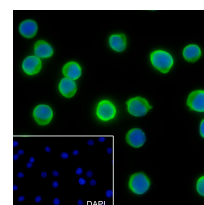
<b>Host:</b> Rabbit	<b>Isotype:</b> IgG/Kappa	<b>Applications:</b> <b>WB</b> (1:500-2000) <b>IHC-P</b> (1:100-500) <b>IHC-F</b> (1:100-500) <b>IF</b> (1:100-500) <b>ICC/IF</b> (1:50-200)  <b>Reactivity:</b> Human, Mouse, Rat  <b>Subcellular Location:</b> Cytoplasm
<b>Clonality:</b> Recombinant	<b>CloneNo.:</b> G5E7	
<b>Target:</b> ALDOA		
<b>Purification:</b> affinity purified by Protein A		
<b>Concentration:</b> 1mg/ml		
<b>Storage:</b> 0.01M TBS (pH7.4) with 1% BSA, 0.02% Proclin300 and 50% Glycerol. Shipped at 4°C. Store at -20°C for one year. Avoid repeated freeze/thaw cycles.		
<b>Background:</b> Research areas: Cancer // Cancer Metabolism // Metabolic signaling pathway < Aldolase A (fructose biphosphate aldolase) is a glycolytic enzyme that catalyzes the reversible conversion of fructose-1,6-biphosphate to glyceraldehyde 3 phosphate and dihydroxyacetone phosphate. Three aldolase isozymes (A, B, and C), encoded by three different genes, are differentially expressed during development. Aldolase A is found in the developing embryo and is produced in even greater amounts in adult muscle. Aldolase A expression is repressed in adult liver, kidney and intestine and similar to aldolase C levels in brain and other nervous tissue. Aldolase A deficiency has been associated with myopathy and hemolytic anemia. Alternative splicing of this gene results in multiple transcript variants which encode the same protein. Cellular localization: Cytoplasmic Tissue Specificity: adult liver, kidney and intestine and similar to aldolase C levels in brain and other nervous tissue.		

**— VALIDATION IMAGES —**

Blocking buffer: 5% NFDm/TBST Primary Ab dilution: 1:1000 Primary Ab incubation condition: 2 hours at room temperature  
Secondary Ab: Goat Anti-Rabbit IgG H&L (HRP)  
Lysate: 1: MCF7, 2: HepG2, 3: Mouse kidney, 4: Rat brain Protein loading quantity: 20 µg  
Exposure time: 1 s Predicted MW: 39 kDa  
Observed MW: 35 kDa



Tissue: Human colon cancer Section type: Formalin-fixed & Paraffin -embedded section  
Retrieval method: High temperature and high pressure Retrieval buffer: Tris/EDTA buffer, pH 9.0 Primary Ab dilution: 1:100 Primary Ab incubation condition: 1 hour at room temperature Secondary Ab: SP Kit(Mouse)(sp-0024) Counter stain: Hematoxylin (Blue) Comment: Color brown is the positive signal for bsm-60489R



Cell line: Jurkat Fixative: 4% Paraformaldehyde Permeabilization: 0.1% Triton X-100 Primary Ab dilution: 1:50 Primary incubation condition: 4°C overnight Secondary Ab: Goat Anti-Rabbit IgG Nuclear counter stain: DAPI (Blue) Comment: Color green is the positive signal for bsm-60489R

**— SELECTED CITATIONS —**

- **[IF=4.6]** Tianming Lu. et al. Inhibition of ALDOA and ENO1-mediated Glycolysis of Oridonin as a Novel Anti-tumor Strategy of Non-small Cell Lung Cancer. Advanced Therapeutics. 2024 Apr;;2400027 WB,IF ;Mouse. 10.1002/adtp.202400027