

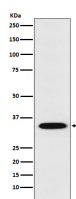
bsm-62368R**[Primary Antibody]****BioSS**
ANTIBODIES

www.bioss.com.cn

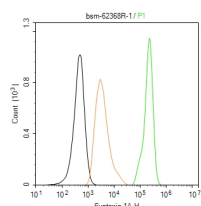
sales@bioss.com.cn

techsupport@bioss.com.cn

400-901-9800

Syntaxin 1A Recombinant Rabbit mAb**DATASHEET****Host:** Rabbit**Isotype:** IgG**Clonality:** Recombinant**GeneID:** 6804**SWISS:** Q16623**Target:** Syntaxin 1A**Immunogen:** A synthesized peptide derived from human Syntaxin 1A: 1-39.**Purification:** affinity purified by Protein A**Storage:** 10mM phosphate buffered saline(pH 7.4) with 150mM sodium chloride, 0.05% BSA, 0.02% Proclin300 and 50% glycerol. Store at 4°C for short term. Store at -20°C for long term. Avoid repeated freeze/thaw cycles.**Background:** Plays an essential role in hormone and neurotransmitter calcium-dependent exocytosis and endocytosis. Part of the SNARE (Soluble NSF Attachment Receptor) complex composed of SNAP25, STX1A and VAMP2 which mediates the fusion of synaptic vesicles with the presynaptic plasma membrane. STX1A and SNAP25 are localized on the plasma membrane while VAMP2 resides in synaptic vesicles.**Applications:** WB (1:1000-2000)**Flow-Cyt** (1:50-100)**IP** (1:20-50)**Reactivity:** Human, Mouse, Rat**Predicted MW.:** 33**Subcellular Location:** Cell membrane**VALIDATION IMAGES**

Western blot analysis of SH-SY5Y cell lysate. Using Syntaxin 1A (bsm-62368R) monoclonal antibody at 1:1000 dilution and 4°C overnight incubation. Followed by conjugated secondary antibody incubation at r.t. for 60 min.



The SH-SY5Y (H) cells were fixed with 4% PFA (10 min at r.t.) and then permeabilized with 90% ice-cold methanol for 20 min at -20°C, the cells then were incubated in 5% BSA to block non-specific protein-protein interactions (30 min at r.t.), followed by secondary antibody incubation for 40 min at room temperature. Primary Antibody (green): Rabbit Anti-Syntaxin 1A antibody (bsm-62368R, 1:100); Isotype Control (orange): Rabbit IgG (bs-0295P). Blank control (black): PBS. Acquisition of 20,000 events was performed.