

**bsm-60524R**

**[ Primary Antibody ]**

## PGAM1 Recombinant Rabbit mAb

**Bioss**  
ANTIBODIES

www.bioss.com.cn

sales@bioss.com.cn

techsupport@bioss.com.cn

400-901-9800

### — DATASHEET —

**Host:** Rabbit

**Isotype:** IgG/Kappa

**Clonality:** Recombinant

**CloneNo.:** D3C4

**Target:** PGAM1

**Immunogen:** A synthesized peptide derived from human PGAMA1: 1-54/254.

**Purification:** affinity purified by Protein A

**Concentration:** 1mg/ml

**Storage:** 0.01M TBS (pH7.4) with 1% BSA, 0.02% Proclin300 and 50% Glycerol.  
Shipped at 4°C. Store at -20°C for one year. Avoid repeated freeze/thaw cycles.

**Background:** PGAM1 belongs to the phosphoglycerate mutase family, BPG-dependent PGAM subfamily. It is involved in the interconversion of 3- and 2-phosphoglycerate with 2,3-bisphosphoglycerate as the primer of the reaction.

**Applications:** WB (1:500-2000)

**IHC-P** (1:50-200)

**IHC-F** (1:50-200)

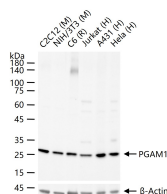
**IF** (1:50-200)

**Flow-Cyt** (1:50-100)

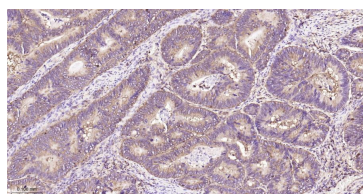
**Reactivity:** Human, Mouse, Rat

**Subcellular Location:** Extracellular matrix  
**Location:** ,Cytoplasm

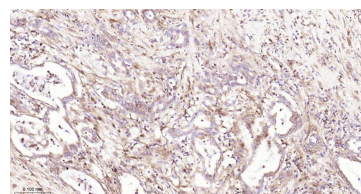
### — VALIDATION IMAGES —



25 ug total protein per lane of various lysates (see on figure) probed with PGAM1 monoclonal antibody, unconjugated (bsm-60524R) at 1:1000 dilution and 4°C overnight incubation. Followed by conjugated secondary antibody incubation at r.t. for 60 min.



Paraformaldehyde-fixed, paraffin embedded Human Colon Cancer; Antigen retrieval by boiling in sodium citrate buffer (pH6.0) for 15 min; Antibody incubation with PGAM1 Monoclonal Antibody, Unconjugated(bsm-60524R) at 1:200 overnight at 4°C, followed by conjugation to the bs-0295G-HRP and DAB (C-0010) staining.



Paraformaldehyde-fixed, paraffin embedded Human Pancreatic Cancer; Antigen retrieval by boiling in sodium citrate buffer (pH6.0) for 15 min; Antibody incubation with PGAM1 Monoclonal Antibody, Unconjugated(bsm-60524R) at 1:200 overnight at 4°C, followed by conjugation to the bs-0295G-HRP and DAB (C-0010) staining.